

Human IL-6 R alpha/CD126 Protein



Cat. No. ILR-HM26R

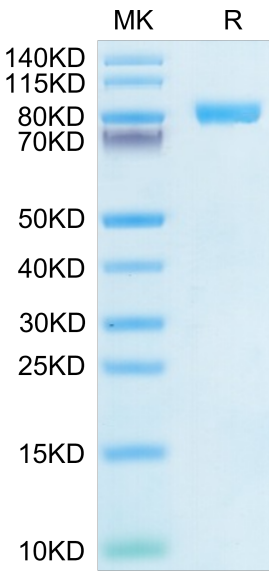
Description	
Source	Recombinant Human IL-6 R alpha/CD126 Protein is expressed from HEK293 with hFc tag at the C-Terminus. It contains Leu20-Pro365.
Accession	P08887-1
Molecular Weight	The protein has a predicted MW of 65.3 kDa. Due to glycosylation, the protein migrates to 85-110 kDa based on Bis-Tris PAGE result.
Endotoxin	Less than 1 EU per µg by the LAL method.
Purity	> 95% as determined by Bis-Tris PAGE > 90% as determined by HPLC

Formulation and Storage	
Formulation	Lyophilized from 0.22µm filtered solution in PBS (pH 7.4). Normally 8% trehalose is added as protectant before lyophilization.
Reconstitution	Dissolve the lyophilized protein in distilled water. Please refer to the Certificate of Analysis for detailed instructions.
Storage	-20 to -80°C for 24 months as supplied from date of receipt. -80°C for 3 months after reconstitution. Recommend to aliquot the protein into smaller quantities for optimal storage. Please minimize freeze-thaw cycles.

Background	
Serum levels of interleukin-6 (IL-6) are increased in patients with type 2 diabetes (T2D). IL-6 exerts its pleiotropic effects via the IL-6 α-receptor (IL-6R), which exists in membrane-bound and soluble (sIL-6R) forms and activates cells via the β-receptor glycoprotein 130 (gp130).	

Assay Data

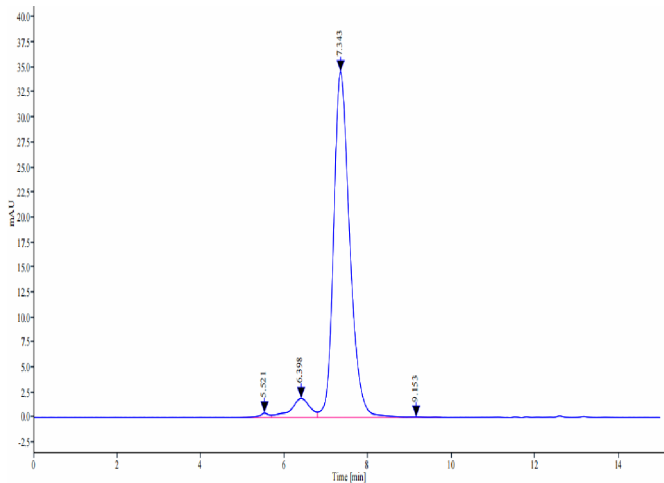
Bis-Tris PAGE



Human IL-6 R alpha on Bis-Tris PAGE under reduced condition. The purity is greater than 95%.

SEC-HPLC

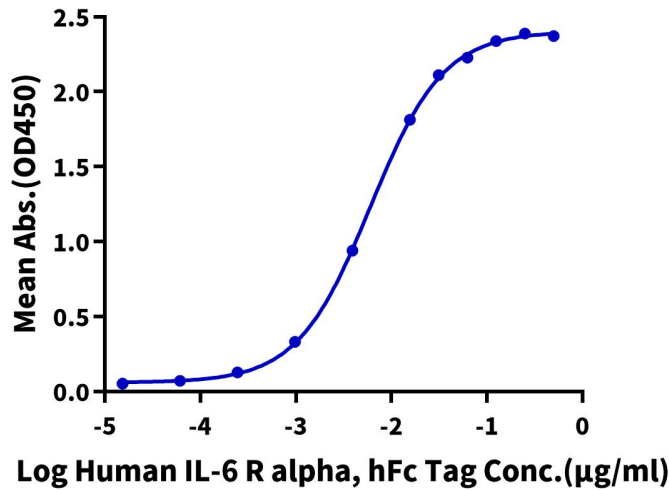
Assay Data



The purity of Human IL-6 R alpha is greater than 90% as determined by SEC-HPLC.

ELISA Data

Human IL-6 R alpha, hFc Tag ELISA
0.2µg Human IL-6, No Tag Per Well

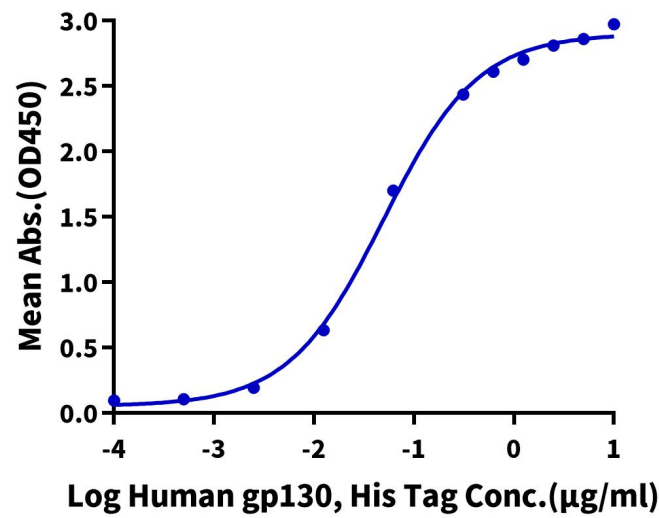


Immobilized Human IL-6 at 2µg/ml (100µl/Well) on the plate. Dose response curve for Human IL-6 R alpha, hFc Tag with the EC50 6.0ng/ml determined by ELISA (QC Test).

Assay Data

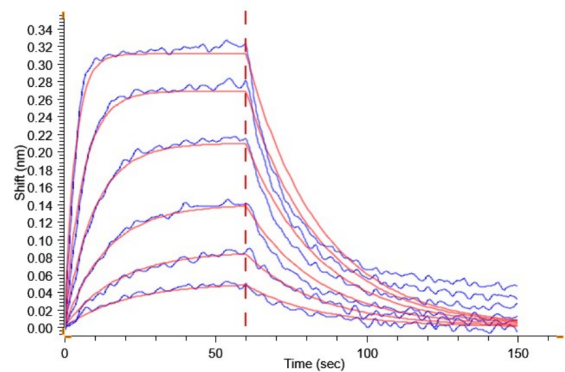
Human IL-6 R alpha, hFc Tag ELISA

0.2µg Human IL-6 R alpha, hFc Tag Per Well



Immobilized Human IL-6 R alpha, hFc Tag at 2µg/ml (100µl/well) on the Human IL-6, No Tag precoated plate (5µg/ml). Dose response curve for Human gp130, His Tag with the EC50 of 49.6ng/ml determined by ELISA.

BLI Data



Loaded Human IL-6 R alpha, hFc Tag on ProA-Biosensor can bind Human IL-6, No Tag with an affinity constant of 16.50 nM as determined in BLI assay (Gator® Prime).